

# SK700™

The future of  
fuel dispensing is here



# next generation enhanced electronics

## built for reliable service

SK700 meets and exceeds international product performance standards for maintenance, service, and installation. Units are designed to meet international regulatory standards and use an advanced architecture to achieve the most open dispenser ever created, incorporating globally designed components from the top to the bottom.

Ergonomically designed for easy use, the SK700 Customer Interface Module (CIM) locates controls conveniently for ease of use and

faster transactions. Modelled after ATMs (Automated Teller Machines), the CIM centralises dispenser and merchandising activity into an intuitive to use private area for the customer.

SK700 is designed to provide better access and customer visibility in and around the forecourt. The CIM is available in three different configurations, Standard Dispenser, CRIND®, and Multimedia, providing an easy path for onsite upgrading payment solutions.



Easy retrofit multimedia computer



SK700 with integrated CRIND

## a masterful integration of technology and design

Ergonomically and ruggedly designed, the SK700 provides a contemporary and familiar image that incorporates the key distinguishing vaines and designs suggested by customers and consumers:

The SK700's high-tech yet customer friendly appeal creates a distinguished look for your site that will attract customers.

Consumers using the CRIND® and Multimedia options will like the familiarity of the ATM-style customer interface, and many consumers associate the quality of the fuel with

the appearance of the dispenser. The transaction area increases customer focus to help speed consumer decisions and fuelling.

The SK700 offers greater merchandising flexibility and a standardised contemporary image that improves visibility for your customers together with new and exciting graphics and internet capabilities to convey your merchandising messages.

And the lower cost of ownership makes it easier for you to keep up with technology faster and more efficiently.

---

## SK700 - a new retailing dimension

# designed to help reduce the COST of ownership

SK700 is built for reliability and ease of service when used with the new cutting edge remote access capabilities. The SK700 diagnostics and software downloads can be initiated off-site, making maintenance or service more efficient than ever.

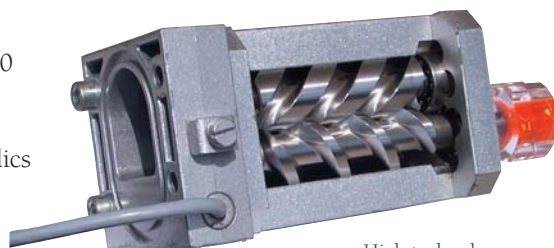
Electronic calibration together with built-in self diagnostics and error data logging tracking the unit's performance, makes servicing SK700 faster and more efficient.

With easy access to the CIM for preventive maintenance or repair, and frequently-accessed functions

such as printer paper refill or captured card removal, the SK700 minimises dispenser downtime.

Standardised monoblock hydraulics feature consistent inlet locations and fewer parts for enhanced reliability and smoother installation. Internal pipe work connections have been reduced and redesigned to minimise possible leak sources.

New digital flow control valves eliminate the need for additional control valves for preset-prepay or transaction flow limiting.



High technology  
Ecometer™ enables meter multiplexing

## a total business management solution

With SK700, Gilbarco takes your business into the future, by integrating the technologies of fuel dispensing, payment systems and on-pump merchandising to create total business management solutions.



### Red Jacket

With increasing requirements put on modern station designs and throughput requirements, the use of pressure technology is growing every day. Red Jacket submersible pumps allow much greater design flexibility as tanks can be located as far from the dispenser island as needed, without any significant loss of performance at the nozzle. Conversely in tight city layouts, using

Red Jacket pressure pumps allows the use of much smaller footprint dispensers, maximising the use of the available space. The pumps can be linked to our automatic tank gauges, continuously monitoring the lines for leaks. With our precision line leak detection software which exceeds strict US EPA standards for accuracy, you can use pressure technology with absolute peace of mind.

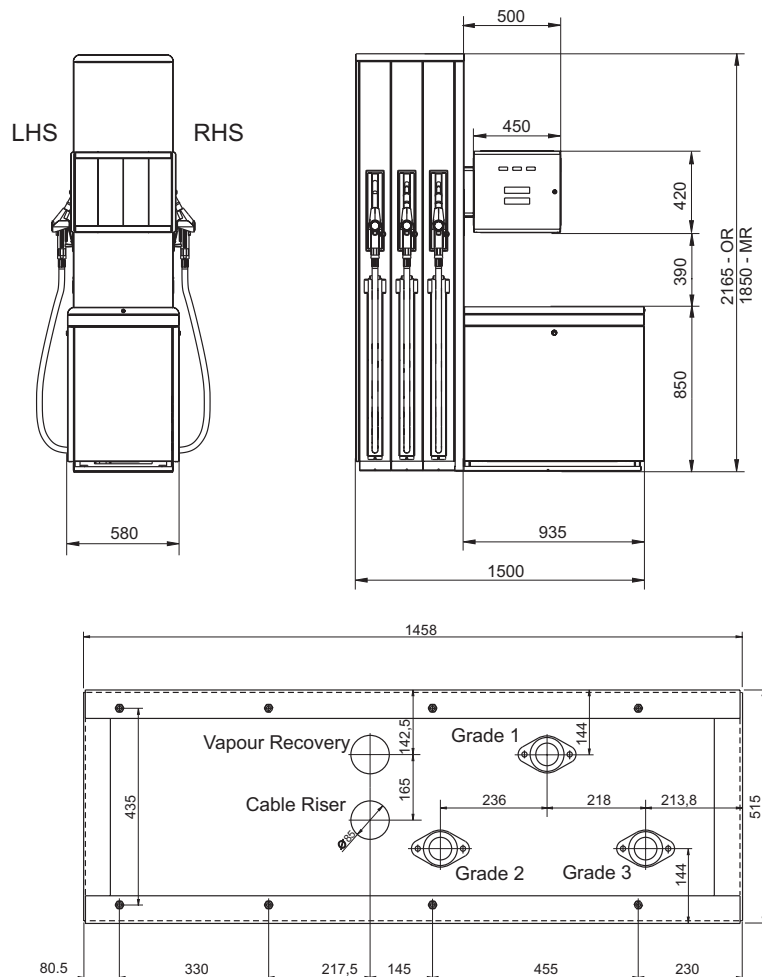
# next generation enhanced electronics

## Features

- Grouped hose and storage system
- Hose retracting option
- Outdoor 'Pay at Pump' option available
- Dispenses up to 4 grades
- Stage 2 Vapour Recovery option
- Monoblock hydraulics
- IFSF communication option
- Enhanced back-lit displays
- Console preset option
- STP Dispenser option
- Interfaces to all major POS systems including the new Passport Europe systems
- STP dispenser option

## Specifications

Housing	Finished in High Quality Stainless Steel Hose Cabinets with painted steel panels.
Frame	Protected by electrostatic powder coating for enhanced corrosion protection and durability
Computer Head	7 segment back-lit displays with GV-R Sandpiper computer including IFSF compatibility
Pumping System	High performance monoblock pumping unit with integral air separator and optional filter
Meter	Ecometer capable of multiplexing
Temperature Range	-50°C to +40°C
Electrical Requirements	220/240v +10% /20% 50Hz +/- 5%



These specifications are for guidance only and Gilbarco Veeder-Root reserves the right to change, without notice, the above specifications in accordance with our policy of continued product improvements.